

welcome to our city



PHASE II ~ HIRA/P/SOU/2018/000031  
Phase IV ~ HIRA/P/SOU/2020/000814 | Phase V ~ HIRA/P/SOU/2020/000845  
[hira.wb.gov.in](http://hira.wb.gov.in)

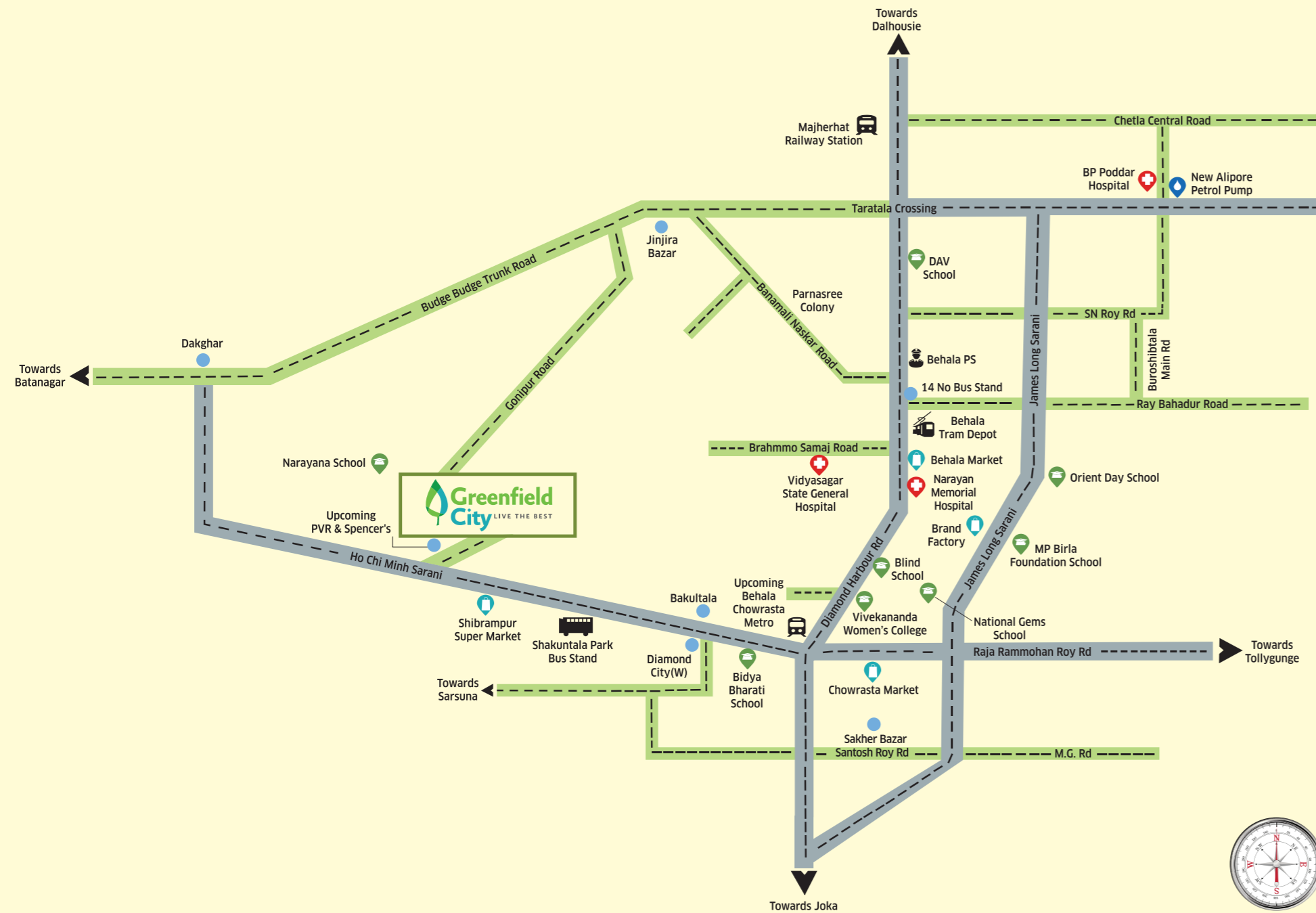




**Greenfield**  
City  
LIVE THE BEST

main Entrance gate

let us take you down and around the neighbourhood



Location map not to scale.



**our amazing city is**  
 spread across 45.69 acres, 33-acres open to the sky, our home near Behala Chowrasta Metro, is a complete city in itself.

it is a majestic reality that has about 3000 families like us living here in one of the largest township projects of south kolkata.

winner of multiple awards, our City is worth a sight to believe in. it has more than we can ask for in a complex of this scale.

- we have**
- two large swimming pools and baby pool with cafe
  - central garden with 17 themed parks spread across the project
  - two luxurious 50,000 sqft club houses
  - tennis, basketball, badminton & volleyball courts
  - night club style party lounge
  - huge AC gym
  - health spas with steam, sauna, jacuzzi and massage
  - very large 5400 sqft AC banquet hall
  - 116-seater miniplex cum theatre
  - well-appointed guest rooms
  - many indoor & outdoor children's play areas
  - AC bus service to nearby metro stations
  - PVR and Spencer's coming soon near the entrance
  - Green all around ...

Bus stop and approach to greenfield city from the main entrance

## look out

from our balcony and discover the wonder that is Greenfield City.

lush greens, waterbody, ducks, swans and pigeons around it. sitting areas, yoga pavillions, jogging tracks ... a real city within a city.



**more greens**

when you wish to find them, outdoor play areas, greens to sit-out or relax on a winter morning or meditate in any of the yoga pavillions. we here, are really spoilt for choice.



Play areas, Jogging tracks, Greens, Fountains, Sunken lawn and Meditation zone



a reason to score  
at our City and win it all  
the way. our Floodlit stadium  
is the surest way to strike up  
a match any day. cricket or  
soccer, what do you wish  
to play?

floodlit Cricket and Football stadium

The image features a large yellow rectangular background. On the left side, there are two overlapping, curved bands that resemble a ribbon or a path. The upper band is a light green color, and the lower band is a slightly darker shade of green. These two bands overlap in the center, creating a darker green area. The bands start from the left edge and curve towards the right. In the center-right area of the yellow background, there is a line of text: "spend some time at both the clubs".

spend some time at both the **clubs**





**club class**  
is how we unwind here. the Royal Greens or Escape are our two Clubs beyond compare. replete with Jacuzzi • Massage Spa • Indoor games room Toddlers' indoor play area • Miniplex • Large AC banquet hall • Party zones Card and Chess rooms Library • Two swimming pools and more.  
enter and discover their wonders yourself.

the two Clubs here are spread scross 50,000 sqft. this is the first Club, ROYAL GREENS with double height Lobby, 5400 sqft double height AC banquet hall, well-appointed Guest rooms, Library, Indoor games room, Kids' play area, Miniplex with lobby, AC gym, male and female Spa, Massage room and Steam bath, Jacuzzi, Rooftop swimming pool with Cafeteria



### two for joy

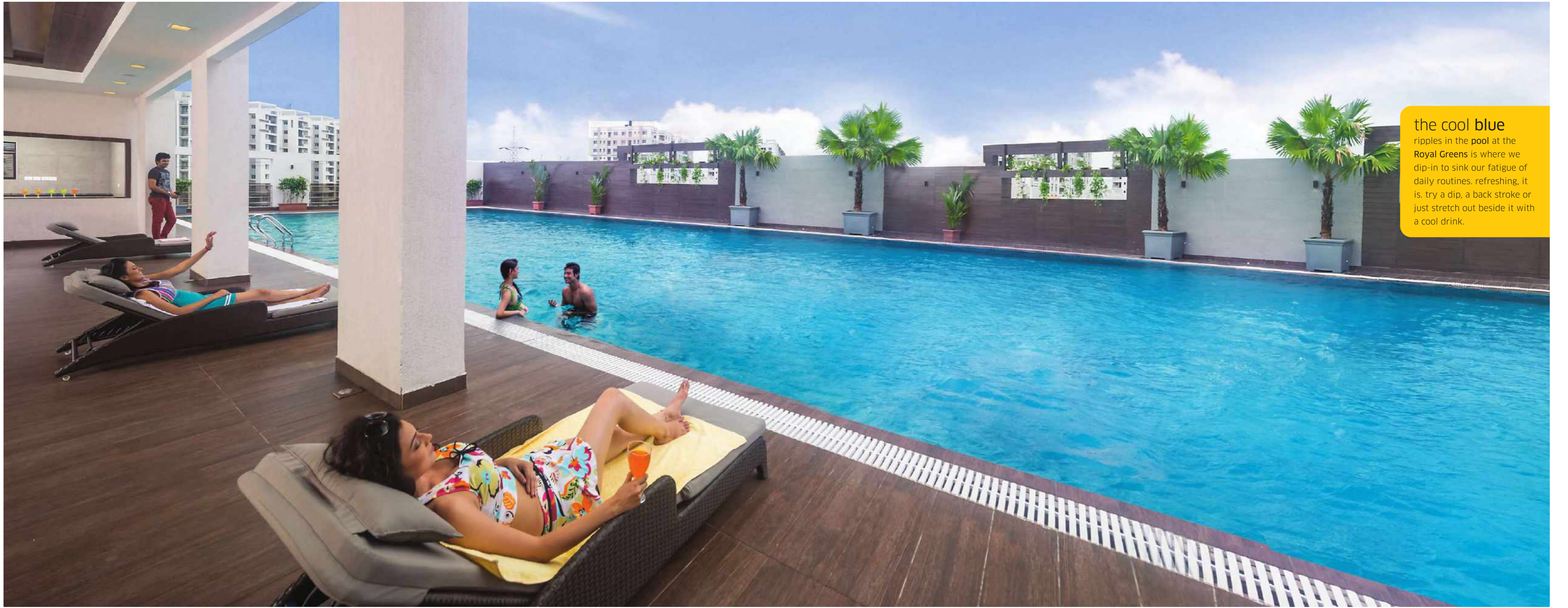
is what will come to your mind when you're faced with more than you wished for. the first club, **Royal Greens** and the second Club, **Escape** spread over 50,000 sqft with party zones • steam • sauna, jacuzzis and swimpools among other things will surely make you feel whether one lifetime is really enough.

the second Club, ESCAPE has Reception and lobby, Yoga pavilion, Swimming pool with Steam and Massage room, Video gaming zone, Party lounge, Cards room and Outdoor sitting area



smash dunk  
and volley  
at the Tennis, Badminton,  
Basketball and Volleyball  
Courts outside the Royal  
Greens. oh, there's  
a Kids' play zone to your  
left as well.

Badminton, Tennis, Volleyball and Basketball courts



the cool blue ripples in the pool at the Royal Greens is where we dip-in to sink our fatigue of daily routines. refreshing, it is. try a dip, a back stroke or just stretch out beside it with a cool drink.

the Rooftop swimming pool with Baby pool at ROYAL GREENS



rest relax  
repeat

at the lounge at **Escape**, the **Yoga pavillion** on the green outside invites us to take a deep breath every time we wish to take a break from the usual clubbing.



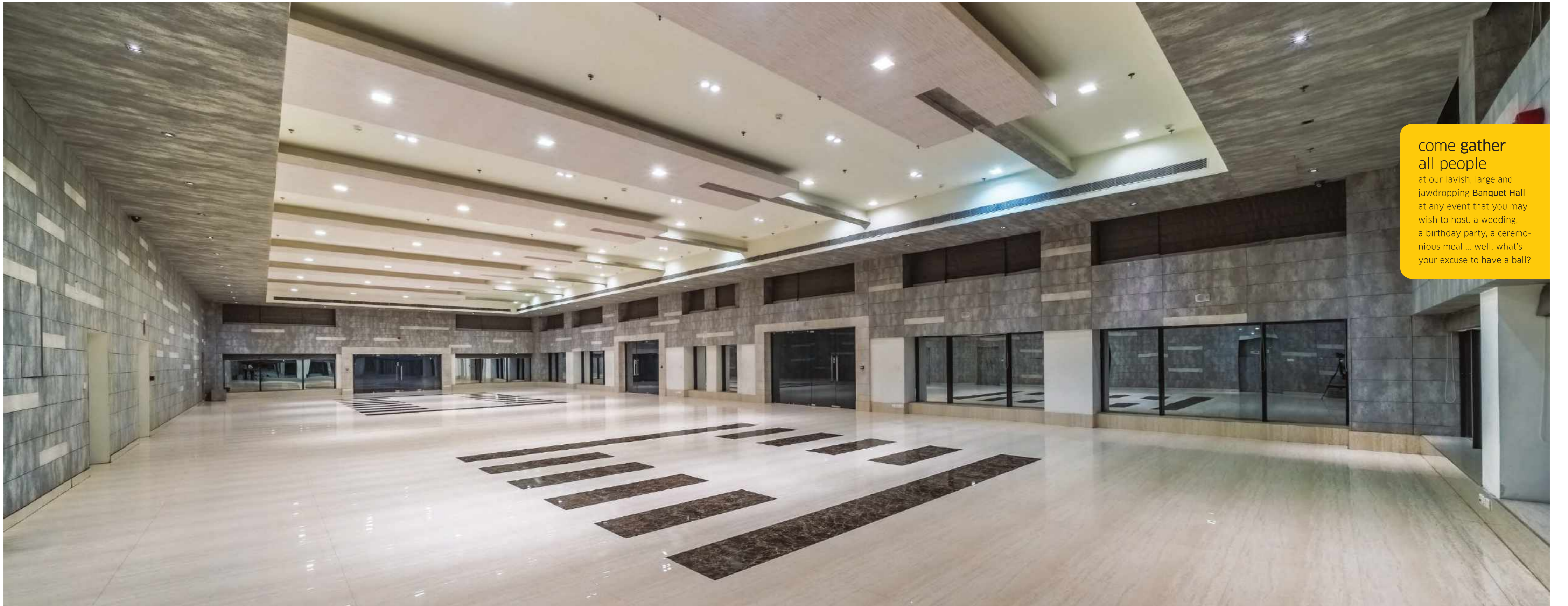
come rain  
come shine  
our Indoor games room  
offers enough reason to  
exercise our senses and  
our limbs. serve, smash or  
plan the next move for a  
checkmate, it's all here.

large Indoor Games Room at ROYAL GREENS

yesterday once  
more

will return as you'll recall the way you played with friends when there wasn't a thing to worry about. exactly our feeling when we see our kids roll over for more joy and fun filled games at their very own Kids' play room.





come gather  
all people

at our lavish, large and jawdropping Banquet Hall at any event that you may wish to host. a wedding, a birthday party, a ceremonious meal ... well, what's your excuse to have a ball?

the grand spacious 5400 sqft Banquet Hall at ROYAL GREENS



a **healthy** mind in  
a **healthy** body

is what we believe in when  
we recall the old latin phrase,  
which is why, what you see  
is what you get at our lavish  
**Fitness Centre** spread out  
such that's an envy to many.  
tone your muscles to tune  
your day here with us,





party of  
a lifetime  
at the Party Zone and  
Lounge at the Clubs every  
weekend or any other day  
when you find an excuse.  
call friends over and show  
them the way we live life  
in our City.



may the shows  
go on  
at our Miniplex the way  
you wish it. choose a film to  
watch with friends and  
family or just rekindle your  
memories with a family video  
on large screen. a wedding,  
birthday, or just another party  
to cherish.

the 116-seater Miniplex cum Theatre at ROYAL GREENS



**boards sans  
boredom**  
is a promise when you spend a while with a good hand of cards or plan a way to knock-off the king on the chessboard. our **Card and Chess rooms** are just the place for your board games when you wish. well, boredom isn't an option here.

when you wish  
to call it a day  
we will make sure you're  
tucked in cosily at the plush  
Guest rooms at the Club.  
have a good night's sleep  
till we meet tomorrow at  
day-break for more.



Guest rooms at ROYAL GREENS

The image features a solid yellow background. On the left side, there are several overlapping, curved shapes in various shades of green and yellow, creating a layered, abstract effect. The text is positioned on the right side of the image.

pick up some quick stuff from our **shopping arcade**

## spoilt for choice

at our Green Arcade? may we suggest you pick up what you really need at the moment before you walk out of the gates and hit the Spencer's store or the PVR Cinemas for the latest flick. will you, please?

coming soon

spencer's

PVR CINEMAS

PVR and Spencer's will be located just 250 metres away from the main gate.

## Green Arcade has

Elite ~ gift shop, party & event organiserers • French Loaf ~ bakers & confectioners  
MR Interiors ~ home furnishings decor store  
Shibaay Pharmacy ~ medicines  
Kalon ~ ladies' & gents' parlour • Hungru Pizza ~ pizzas • Fresh Wash ~ laundry  
Needs ~ ladies' boutique  
Scientific Clinical Centre ~ doctor's chamber • Daily Needs ~ department store  
Greenfield Tea Store ~ tea store • Kanhaiya ~ patanjali shop • Padma's Bakehouse ~ cafeteria





the way we live



life here is  
**eventful** every  
day of the week. be it  
tournaments, festivals,  
gatherings ... whatever.  
there isn't a moment's  
dullness with so much to do  
with our lovely neighbours.





the way we  
commute is  
unique in its own  
way with an AC bus  
service that plys between our  
City and the nearest Metro  
stations. Hop on and hop off  
without missing a train.  
step in. wash up, if you may.



if we're under the weather here for any reason, there's a well-stocked Pharmacy and an Ambulance that's on stand-by 24x7. together, they minimise health worries to a great extent.

the Pharmacy with medicine home-delivery facility and the Ambulance



our wins

SOME  
METALS FOR  
OUR CITY,  
AMONG MANY  
MORE.



**Property India Estate Award 2015.**  
Affordable Housing of the Year (East)  
Organised by FRANCHISE INDIA  
In media partnership ET NOW.



**DNA Presents Real Estate & Infrastructure Round Table Award 2016.**  
Affordable Housing of the Year.



**10th CNBC Awaaz Real Estate Award 2015-16.**  
Best Residential Project in Kolkata under Affordable Segment.



**Golden Bricks Award 2016.**  
Al Jaddaf, Dubai.  
Budgeted Housing Project of the Year (Regional).



**Parryware NDTV Property Awards 2016.**  
Township Project of India (Under 200 acres).



**Realty Plus Conclave & Excellence Awards 2017**  
Best Township Award (Below 350 acres).



**CREDAI Bengal Realty Awards 2018**  
Best completed budget housing project (Above 4 lakh sqft).



**ET Now Real Estate Awards 2018**  
Integrated Township of the Year.



**ET Now Real Estate Awards 2018**  
Affordable housing of the Year.



**Remax India Estate 10th Annual Awards 2018** organised by Franchise India & Media Partner ET Now  
Integrated Township of the Year.

be a part of our city



NOTE

Photographs used in this brochure are all actual images and a few artist impressions for illustration purposes only. The information, features, offerings and other details herein are only indicative and the developer/owner reserves its right to change any or all of these in its discretion subject to grant of approval from relevant authorities.

This printed material does not constitute an offer, an invitation to an offer and/or commitment of any nature between the developer/owner and recipients.

The developer's/owner's website(s) and other advertising and publicity material include artist impression indicating the anticipated appearance of completed development. No warranty is given that the completed development will comply in any degree with such artist's impression. Costs, designs and facilities and/or specifications may be subject to change without notice. Any decorative item and furniture shown in any unit/Private terrace/Private area are not a part of our offering. This is just to give an idea how you will use your unit in the best possible way.

**Greenfield City Project LLP**

**Site Office** Joth Sibrampur Road | Holding No E3 398

New Ward 14 (New) | Kolkata 700 141

**Corporate Office** Srijan House | 36/1A Elgin Road

Kolkata 700 020 | Call +91 33 4040 2020 [greenfieldcity.com](http://greenfieldcity.com)

Missed call to know more ~ 92434 40000



PHASE II ~ HIRA/P/SOU/2018/000031  
Phase IV ~ HIRA/P/SOU/2020/000814 | Phase V ~ HIRA/P/SOU/2020/000845  
[hira.wb.gov.in](http://hira.wb.gov.in)